

Derby Horizon



Issue 2

City of Derby Quarterly Community Newsletter

September 2006

Derby Skate Park Grand Opening

The time has finally come! After several years of discussion and a summer of construction, the Derby Skate Park is ready for skaters, roller bladers and BMX bikers.

While the park has been open to skaters since the end of July, the grand opening event is scheduled for Saturday, September 23, at 10:00 a.m.

A ribbon cutting ceremony is planned, along with donor recognitions, skating exhibitions, free food and drinks, door prizes and much more. You won't want to miss out on this exciting event!

The Derby Skate Park is a \$280,000 project funded by various sources, including the City of Derby, a Kansas State



Wildlife & Parks Grant, the Derby Recreation Commission and many civic and private donors.

The park features a large bowl, stairs, ramp grind rail, boxes and pyramids.

The park is open every day from 8 a.m. to 10 p.m. Rules and regulations are posted at the park entrance on the building. Rules require that skaters wear

protective gear at all times. The City will not be liable in case of an accident.

An on-site vendor is planned to be open seven days a week (contract pending at press time). The vendor plans to sell skate equipment along with snacks and beverages.

New 4-Way Stop

The intersection at Woodlawn & James will be a four-way stop effective September 5, 2006. New stops signs will be at all four corners to help alleviate traffic congestion and improve pedestrian safety.

At the July 25 meeting, the City Council voted unanimously to change the intersection to a four-way stop. This area sees increased traffic during the school year and during the morning and late afternoon hours. It is in the heart of a residential neighborhood, so vehicle and pedestrian safety is a high priority for City officials.

City staff will continue to research ways to improve traffic flow in this intersection. City engineering staff worked with traffic engineers at TranSystems Corporation of Kansas City, to determine that a four-way stop would be the best option for the intersection. Engineers considered a signal light, but concluded it was not warranted.

what's inside

message from the manager	2
new city boards	3
transportation program	4
senior center activities	4
milling & overlay projects	5
phase 6 hike & bike path	5
concealed carry law	6
fire prevention week	6
pedestrian safety	6
hike & bike path etiquette	7
hand park feature	7
community marketing	8

2007 Budget Highlights

The City Council approved the 2007 budget at the August 8, 2006 meeting.

The \$25.3 million budget is 8.5% more than 2006, largely in part to future construction on Rock Road from James to 63rd Street.

Plans include widening the corridor to four lanes with a continuous center turn lane and adding hike and bike paths as well. This \$3.6 million project is expected to begin summer 2007.

New to the City is a Homeowner Rehabilitation Program, for which the City hopes to receive a \$300,000 grant. This grant would provide funds to improve aging

neighborhoods.

Another highlight is a Transportation System in which the City will provide bus access for Derby residents to businesses and public facilities. The system is expected to cost \$156,892, which includes three employees (one full-time dispatcher and two part-time drivers), the cost of the bus and other related expenses, such as gas. The system will operate out of the Senior Center. For more information on this program, see page 4.

There will not be a mill levy increase in 2007. If you would like to view the budget, log on to www.derbyweb.com.

city staff

City Manager

Kathy Sexton
788-3132

kathysexton@derbyweb.com

City Attorney

Phil Alexander
788-3132

philalexander@derbyweb.com

Director of Operations

Ted Austin
788-3132

tedaustin@derbyweb.com

City Engineer

Charlie Brown
788-6632

charliebrown@derbyweb.com

Director of Finance/City Clerk

Jean Epperson
788-3132

jeanepperson@derbyweb.com

Director of Public Works & Parks

Robert Mendoza
788-0301

robertmendoza@derbyweb.com

Director of Economic Development & Public Relations

Allison Moeding
788-3081

allisonmoeding@derbyweb.com

Police Chief

Jay Reyes
788-1557

jayreyes@derbyweb.com

Fire Chief

Brad Smith
788-3132

bradsmith@derbyweb.com

Message from the Manager

2008: Hotel in Derby?

The prospect of a hotel being constructed in Derby next year for opening in 2008 is a current issue before the City Council. A Hampton Inn is proposed at a site near Rock Road just west of Intrust Bank.

Why is the issue before the Council? Because developer Eric Tauer and his partners requested Industrial Revenue Bond financing, which includes a 10-year property tax abatement and a sales tax exemption on project construction.

Also proposed is an adjoining 5,000 square feet of meeting rooms if the City would contribute \$700,000 to the project.



Does Derby need meeting rooms for wedding receptions, class reunions, training seminars, or other events? Should the City help pay for them? Would the City prefer

to use public funds for new meeting rooms at the proposed library or other community facility?

How would the City pay for such an investment in meeting rooms? One possible way is to pass a transient guest tax. This is a tax paid by people who stay at hotels all over the country. In Kansas, 74 cities and 31 counties have such a tax. Derby does not. We have never had a hotel, so there has been no need for such a tax.

Sedgwick County has this tax, so when a hotel comes to Derby, the tax proceeds will go to County coffers, unless Derby passes the tax and works with the County to allow our tax to replace theirs. By state law, proceeds of this tax are used only for convention and tourism promotion. This includes marketing efforts and other activities to attract visitors.

Many policy and financial issues are being debated at City Hall right now. A public hearing on the requested Hampton Inn incentive package is planned for 7 p.m. on September 12 at the City Council meeting. Meetings are held at Derby City Hall, 611 Mulberry Rd.

City of Derby ADA Information

The City of Derby is committed to complying with the federal Americans with Disability Act (ADA).

The City's policy says that "no qualified individual with a disability shall, on the basis of disability, be subjected to discrimination; be excluded from participation in; or be denied the benefits of services, programs or activities of the City of Derby.

Nor shall any such individual be subject to discrimination of employment, either directly or through contractual arrangements entered into by the City of Derby."

Any individual who wishes to request a specific accommodation (including communication aids or services) to facilitate the delivery of services or participation in programs, meetings, or other

activities provided by the City of Derby should contact:

Jenny Thrush

ADA Coordinator

611 Mulberry Rd. Ste. 300

316-788-3132 phone

316-788-6067 fax

She can also be reached at jennythrush@derbyweb.com.

In July 2006, the City Council approved the establishment of an ADA Advisory Board. The mission of this board is to receive input from the public as the City of Derby updates its self-evaluation plan and develops an ADA Transition Plan to achieve compliance with the Americans with Disabilities Act.

At least four of the six board members should be disabled or are representatives of an organization or group that provides services to the disabled.

Calendar

September 4: Labor Day

City offices closed

October 29

Daylight Saving Time ends

October 31

Halloween

November 10: Veterans Day

City offices closed

November 23 & 24:

Thanksgiving Break

City offices closed

Official Publication

The *Derby Weekly Informer* is the City of Derby's official publication for all bids, public hearings, ordinances and other publications.

The *Informer* is printed once a week and is available each Wednesday.

The City of Derby strives to keep its citizens informed about the City's ordinances and codes and any amendments to these legal documents.



Derby City Hall
611 Mulberry Rd. Ste. 300
788-1519

Derby City Council

New City Boards

In early 2006, the Derby City Council voted to combine two boards (Park and Tree Boards) to form the Parks & Urban Forestry Board.

The Council also voted to create the ADA Advisory Board, Economic Development Board and Ordinance Review Advisory Board.

Listed below are each new board and its members.

ADA Advisory Board

The Mayor has not yet appointed its members.

Economic Development Board

The board meets on third Monday of the month at 5:30 pm at City Hall.

Robert Ash
Jennifer Drouhard
Paul Muehring
Mike Sikes
Jeff Smith
*Kristin Ward

Ordinance Review Advisory Board

The board meets on the third Tuesday of the month at 6 pm at City Hall.

Jerry Bozeman
Daniel Cady
Marilyn Newkold

Parks & Urban Forestry Board

The board meets on the second Thursday of the month at 11 am at City Hall.

Jason Griffin
*Gial Kaegi
Judy Morris
David Peebler
Tom Prunier
Eric Tauer

*Chair person

Council Considers Clean Air Ordinance

The Derby City Council held a public hearing at the August 22 meeting to gather input from residents about their thoughts on a clean air ordinance in Derby.

Clean air ordinances have been a hot topic nationwide, particularly after a June 27, 2006 report by the Surgeon General emphasizing the health dangers of secondhand smoke. Several Kansas communities, including Lawrence, Salina, Overland Park and Hays, have various types of ordinances in place.

The Surgeon General's report can be found at:

www.surgeongeneral.gov/library/secondhandsmoke/.

Smoking and tobacco use are currently prohibited on USD 260 school grounds and inside City facilities.

If you would like to voice your opinion on this subject, please email your Ward representative or email the City Council by logging onto www.derbyweb.com. Stay tuned to Channel 7 for updates.

Derby 2016 Update

Can you imagine what the City of Derby will be like in 10 years? How do you think it will be different? What kinds of things do you think will be built here over the next decade? The City of Derby spent many hours surveying area residents to find answers to these questions.

City Manager Kathy Sexton established the City's "town hall meetings" to conduct our own visioning process. This



resulted in a lot of discussion and ultimately information to be used in strategic planning by the City Council.

Comments from each town hall meeting have been posted on the City's website, www.derbyweb.com. If you have questions please contact Mandy Wagner, Assistant to the City Manager, at 788-1519 or mandywagner@derbyweb.com.

Economic Development Board Update

The City's new Economic Development Board met for the first time on July 17, 2006.

The Board, which was created by the City Council in April, consists of five Council appointees and one Derby Chamber of Commerce appointee. Members appointed on June 27 were Robert Ash, Jennifer Drouhard, Paul Muehring, Mike Sikes, Jeff Smith (appointed by the Chamber of

Commerce) and Kristin Ward.

Ward was selected by the board members to serve as the chairperson for the inaugural year.

The Board meets on the third Monday of every month at City Hall at 5:30 p.m. Its responsibilities include reviewing information and making recommendations to the City Council on development projects, policies and programs.

city council

Mayor

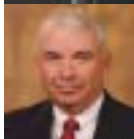


Dion Avello
788-0922
acmelithoenv@aol.com

Ward I



Jim Craig
788-4449
jscraig.ward1@sbcglobal.net



Jim Meidinger
788-2717
jmeidinger@cox.net

Ward II



Chuck Warren
788-2757
chuck@
derbyhomesales.com

Vacant Seat

Ward III

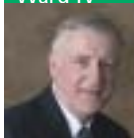


Cheryl Bannon
789-8356
lcbannon@cox.net

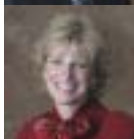


Charlie Schwarz
788-5827
chasbs@aol.com

Ward IV



Ken Mulanax
788-4774
kdmulanax@sbcglobal.net



Lori Payne
788-4589
payne7744@cox.net

The Derby City Council meets on the 2nd and 4th Tuesday of every month at 7 pm at Derby City Hall, 611 Mulberry Rd.

Meetings are broadcast live on Derby Channel 7.

You may also contact the City Council at 788-3132.

channel 7 programming

City Council Meetings
2nd and 4th Tuesday
of the month at 7 pm

Rebroadcast Meetings
Sunday, Wednesday
& Friday at 2:30 pm

Monday & Thursday
at 7 pm



contact info

The Derby Horizon is a quarterly publication by the City of Derby's communications staff and Communications Team.

If you have questions or comments, please contact Communications Coordinator Kristy Nunn at kristynunn@derbyweb.com or 788-1519.

Any mailed correspondence should be sent to:

Derby City Hall
Attn: Communications
Coordinator
611 Mulberry Rd. Ste. 300
Derby, KS 67037

Derby Senior Center

Derby Transportation System

The City of Derby recently applied for a Kansas Department of Transportation Grant through the Wichita Transit Authority. The following is an overview of the Transportation System, which is part of the 2007 budget.

The Derby Transportation System will provide safe, accessible and affordable transportation to the elderly and persons with disabilities, as well as all citizens who reside within the city limits of Derby. The system will enhance access to programs, services and activities which will improve quality of life and help participants maintain their choice of lifestyle.

Persons who are eligible for bus services are all citizens



residing in the city limits of Derby. The service area covers 8.26 square miles and includes a population of approximately 20,000 people.

The new bus, equipped to accommodate the special needs of the elderly and the disabled, will provide low-cost transportation for the Derby community. During the first year, the 12-passenger bus is estimated to generate 10,000 rides. Destinations will include

the local grocery store, banks, post office, medical facilities, Senior Center and other facilities.

The weekday bus route will be demand response (curb to curb) and will run within the City limits. Flexibility and adjustments in service times and schedules will be made as specific needs arise.

Transportation will be available from 9:00 a.m. to 3:00 p.m. Monday through Friday. The dispatcher will receive calls Monday through Friday between 8:00 a.m. and 5:00 p.m. Advance notice of at least 24 hours is required. Actual service times may vary from these hours as needs arise.

If you have questions, call the Senior Center at 788-0223.

Get Fit & Stay Fit at the Senior Center

The Derby Senior Center offers a wide variety of classes to help senior citizens get fit and stay fit.

The Center offers two yoga classes - regular Yoga is on Wednesday at 4 p.m. and Restorative Yoga is on Thursday at 4 p.m. Classes are \$2.50 each.

The Exercise With a Purpose class is on Monday, Wednesday and Friday at 9 a.m. Classes are free.

The Weight Training class is on Tuesday and Thursday from 10:30 -11:30 a.m. The cost is \$1 per class.

There are also two Tai Chi



classes. This is a traditional Chinese martial art that combines deep breathing and

relaxation. Beginning Tai Chi is on Monday at 2 pm and Wednesday at 11:30 a.m. Advanced Tai Chi is on Monday at 3 p.m. and Wednesday at 10:30 a.m. Cost is \$2.50 per class.

The Center also has a Fitness Room (pictured above) that has three treadmills and two recumbent bikes. It's open Monday through Friday from 8:00 a.m. to 4:00 p.m.

Upcoming Events

Master of the Sky

Visit the Eagle Valley Raptor Center, located near Cheney, and see many varieties of owls.
Monday, September 18
Depart at 3:00 p.m.
\$15/person

Health & Wellness Fair

There will be blood draws, blood pressure checks, random glucose checks and much more.
Friday, September 29
8:30 a.m. – 12:00 p.m.
Free

Rolling Hills Zoo

Tour the 145-acre ranch in Salina and see more than 85 species of animals.
Thursday, October 12
Depart at 8:00 a.m.
\$42/person

2006 Street Maintenance Projects

The City of Derby and USD 260 conduct milling & overlay projects each year. The projects are bid together to achieve a better price.

The 2006 City projects, which are part of the 2006 Street Capital Improvement Plan, began the last week of July and were completed the first week of August.

Lafarge North America was the general contractor. The total project cost was \$466,804, of which \$402,797 was for City streets and \$64,007 was for USD 260 projects.

The milling and overlay program is necessary to improve roadway structural integrity, provide a smoother driving surface, and reduce maintenance

costs.

Milling and overlay projects are listed below:

- Circle Dr.: Kay to Market
- Mary Etta: Lauber Ln. to Market
- Derby: Kay to Crestway
- Georgie: Madison to Crestway
- Kokomo: Walnut to Crestway
- Westview Dr.: Britain to Crestway
- Lakeview Dr.: Britain to Crestway
- Baltimore Ave. : Wedgewood Dr. to Crestway
- Crestway: Buckner to Westview Dr.
- Walnut: Georgie to Derby

Grass Clippings

In order to keep our City facilities functioning correctly, we must take care of our storm water drainage system. One way to ensure this system is working properly is to keep foreign objects out of it, specifically grass clippings.

When mowing, edging or gardening, please dispose of grass clippings and other debris appropriately. Do not blow or sweep grass clippings into the street. Many times the wind carries the grass to the storm water drain. The storm water system is not designed to handle this sort of debris - only storm water.

If you have any questions, please call our Code Enforcement Office at 788-6632.

soil erosion

Soil erosion is a major contributor to pollution in waterways, both here in Derby and nationwide. The City of Derby has ordinances in place to help combat soil erosion problems. Environmental staff from the City's Wastewater Department work hard to control the amount of soil erosion in the City.

Residential and commercial builders as well as residents with new homes without established lawns need to be aware of their responsibilities.

We recommend that you install or maintain BMP's. A BMP is a temporary silt fence barrier or sod filter strip around your lot to prevent soil run off.

Establish cover as quickly as possible. If the timing, budget or season is not appropriate for seeding or sod, you need to find additional controls to prevent soil loss from your lot. Alternatives include mulch or other vegetative materials.

Redirect your downspout so rain water runs away from the bare soil on your lot. You can purchase a flexible plastic pipe to direct water away from your soil and into storm water drains or grassy areas.

If you have questions, please contact the Wastewater Department at 788-1151.

Well Permits

The City of Derby requires residents to obtain a free well permit prior to drilling a well on their property. Permits can be picked up at Derby City Hall, 611 Mulberry. Business hours are Monday through Friday from 8 a.m. to 5 p.m.

The City requires permits to ensure that wells are not placed in public right-of-way or in a utility easement. This reduces the risk of dangerous and expensive utility damage. It also protects residents by verifying that well drillers are properly licensed. This practice provides for the continued safe supply of ground water as well.

If you have questions, please contact the City of Derby Engineering department at 788-6632.

Phase 6 Hike & Bike Path

The City of Derby is currently designing Phase 6 of the City's Hike & Bike Path.

An open house for Phase 6 was held on Thursday, June 29, to hear from citizens about concerns and issues.

Citizens had the opportunity to view concept plans for the additions to the City's Hike & Bike Path system. City engineering staff and the project design consultant, TranSystems Corporation, were on hand to answer questions.

Phase 6 will be built along



Woodlawn from Market to Meadowlark; along James from Woodlawn to Buckner; and along Dry Creek from Meadowlark to 63rd St.

The project will add 2.7 miles to the City's existing 14 miles of

Hike & Bike Path.

This project is estimated to cost \$989,000. The City was awarded \$708,000 last spring from the Kansas Department of Transportation's Transportation Enhancement Program. The remaining \$281,000 will be paid by the City.

Building Permits Issued

as of July 31, 2006

188 building permits
(97 permits for single family housing)

pedestrian safety

The school year recently began and one of the concerns of school officials and parents is the safety of children who are walking to school.

Listed below are some tips for children, parents and motorists from the National Highway Traffic Safety Administration regarding pedestrian safety:

- Always cross at an intersection or crosswalk. Before crossing a street, stop at the curb, look left, right and left again. Continue to watch for traffic when crossing.
- Walk facing traffic when there are no sidewalks so you can see what's coming.
- If you must walk through parked traffic, stop and look carefully before stepping out from between vehicles. Don't run between parked cars and buses and don't run across the street or through a parking lot.
- At intersections with traffic lights and pedestrian signals, follow the signals carefully. Wait until you see the WALK signal, and follow the basic rules for crossing.
- A flashing DON'T WALK signal indicates you should not begin to cross the street. But, if you've already started crossing when it begins flashing, continue walking. The timing mechanism in the signal device allows you time to cross before it changes to steady DON'T WALK signal.
- Always watch for turning cars when crossing the street.

We hope you have a safe and happy school year. If you have questions about pedestrian safety, log on to www.nhtsa.gov.

Public Safety

Police Department

Concealed Carry Application Process

The Kansas Personal and Family Protection Act will permit Kansas residents to carry a concealed handgun (CCH).

Permits will be issued through the Kansas Attorney General's Office after January 1, 2007. Right now, interested parties may submit applications. Forms can be obtained from the Kansas Attorney General's website, www.ksag.org, or you can obtain a paper copy of the application at the Sedgwick County Sheriff's office.

Applicants must complete a minimum of eight hours of state certified firearms training before submitting their application. Applicants may receive their training from any certified trainer. A list of

certified trainers can be found on the Attorney General's website.

The cost of the training is not regulated. Since the certified training is taught by private individuals, the cost of classes will vary from trainer to trainer.

Upon completion of the certified firearms training class, applicants will be given a form signed by the instructor certifying that they have completed the class. A copy of the form must be attached to their application along with a \$40 money order or cashier's check payable to the Sedgwick



County Sheriff office, and a second, separate money order or cashier's

check for \$110 payable to the Office of the Attorney General. After submission of the necessary document the application process may take up to 180 days.

Applicants may have their CCH permit added to their Kansas operator's license, or be issued a separate permit card. CCH permit holders must have their permit in their possession whenever they are carrying a concealed handgun.

For more information please go to the Kansas Attorney General's website: www.ksag.org.

Fire Department

"Watch What You Heat": 2006 Fire Prevention Week

National Fire Prevention Week is October 8-14, 2006. The Derby Fire & Rescue Department will join forces with hundreds of fire departments across the country as well as the National Fire Protection Association (NFPA) to remind local residents to "Prevent Cooking Fires: Watch What You Heat."

During the 2006 fire safety campaign, firefighters will spread the word about the dangers of cooking fires—most of which result from unattended cooking—and talk to school children about how to prevent cooking fires from starting.

According to the NFPA, cooking is the leading cause of house fires. One out of three house fires begins in the

kitchen. Cooking fires are also the leading cause of home fire-related injuries.

Fire safety tips for the kitchen:

- Stay in the kitchen when you are frying, grilling, broiling or boiling food.
- If you must leave the room, even for a short period of time, turn off the stove.
- When you are simmering, baking or roasting food, check it regularly, stay in the house, and use a timer to remind you.
- If you have young children, use the stove's back burners whenever possible.
- Keep children and pets at least three feet away from the stove.
- When you cook, wear clothing with tight-fitting sleeves.

- Keep potholders, oven mitts, wooden utensils, paper/plastic bags, towels and anything else that can burn, away from your stovetop.
- Clean up food and grease from burners and stovetops.

Derby firefighters will continue the tradition of visiting all public and private schools during Fire Prevention Week. With the use of the Fire Safety House and printed material, firefighters teach students in kindergarten through second grade about the importance of fire safety. Firefighters have learned that children are quick to learn fire safety rules and retain them.

Public Works & Parks

Hike & Bike

Path Etiquette

We are fortunate to live in a community that values recreation and outdoor activities. With these perks come some rules and regulations that everyone should follow, specifically related to the City's Hike & Bike Path.

Here are some simple rules of the road, or in this case, the path, for cyclists:

- Obey all rules of the road, including traffic lights and stop signs.
- Call or point out obstacles or road hazards to other cyclists.
- Let the rider/pedestrian in front of you know you are overtaking him/her by calling out "on your right/left."
- If you are following someone, make sure he/she knows you are behind him/her by calling out "on your wheel."
- Be aware of your surroundings at all times.
- Let cyclists around you know if you are going to stop or slow down by calling out "stopping/slowning."
- Do not ride after dusk without proper lighting.
- Always wear a helmet when you are riding your bike - whether you're on the Hike & Bike Path or the street.
- Remember that pedestrians have the right of way.
- Ride a well-maintained bicycle and know your riding limitations.
- If you're riding in a group, ride in a single file line on the right side of the road or sidewalk.

If you have questions, call the Derby Police Department, 788-1557.

Hand Park

Hand Park, nestled in the heart of a neighborhood, is located directly west of Swaney Elementary at 633 S. Lakeview.



With ample green space, a playground, two sand volleyball courts, bathroom facilities, two covered shelters and a basketball court, this park is a great choice for the entire family.

Hand Park spans 8.4 acres and offers plenty of shade as well.

This park is one of many hidden

treasures in the heart of the City. If you would like to reserve a shelter or sand volleyball court, please contact the DRC at 788-3781. For a complete list of park rental opportunities, visit www.derbyweb.com.

Rent the City Grill

Are you having a family reunion? Picnic at High Park? Well, if you're expecting a crowd, you might think about renting the City Grill!

For only \$50, you can rent the grill for your event.

If you're interested, contact Becky Dodge at the Public Works & Parks Department, 788-0301.



Visioneering Wichita: Recreation

The Visioneering Wichita project includes four counties and has many areas of focus.

Some of the goals of the recreation section of the project are listed below:

- Develop and implement a comprehensive regional master plan for recreation that determines a required level of service for each recreational element.
- Determine the gap between existing facilities and this level of service and eliminate the gap within 10 years while at the same time providing for annual growth as it occurs.
- Ensure that all facilities are staffed and maintained for high quality service.
- Develop a large high quality lake

for recreation, destination resort and water supply within an hour of the Wichita MSA.

- Improve regional recreational use of the Arkansas River. Use the river to connect museums and other cultural attractions. Clean up the Arkansas River.
- Create one or more large amusement/theme/water parks.
- Provide community spaces, green areas and recreational opportunities that celebrate our natural environments, our cultural diversity and our youth.
- Establish a regional park board that is responsible for acquisition, preservation, and management of parks and green space.

For more information on Visioneering Wichita, log on to www.visioneeringwichita.com.

back to school preparation

The City of Derby Street Department has been working all summer to prepare streets, sidewalks and intersections for the 2007 school year.

The Sign Shop reset the timers for the school zone flashing speed limit signs, and graffiti was removed from school signs.

Street crews performed asphalt repairs and street paint striping in school areas.

Crews also cut low-hanging tree branches in front of signs and at corners where vision might be blocked by the foliage.

Street crews are preparing the intersection of James & Woodlawn for a new four-way stop. A message board informing drivers about the change is in place from August 7 through September 8.

The new four-way stop will be ready for traffic on Tuesday, September 5.

See page one for more information on the four-way stop.



city meetings

ADA Advisory Board
To be determined

Board of Zoning Appeals
case-by-case basis
Thursdays @ 7 pm, City Hall

City Council
2nd/4th Tuesdays @ 7 pm, City Hall

Construction Trades Board
every 3 months (3rd Tuesday), City Hall

Economic Development Board
3rd Monday @ 5:30 pm, City Hall

El Paso Water Company Board
4th Tuesday following the
City Council Meeting

Library Board
4th Wednesday @ 7 pm, Derby Library

Ordinance Review Advisory Board
3rd Tuesday @ 6 pm, City Hall

Parks & Urban Forestry Board
2nd Thursday, 11 am, City Hall

Planning Commission
1st & 3rd Thursdays @ 7 pm, City Hall

Senior Center
1st Wednesday @ 1 pm, Senior Center

News Brief

Community Marketing Campaign

The City of Derby, Derby Chamber of Commerce, Derby Community Foundation, Derby Recreation Commission and USD 260 have embarked on a joint Community Marketing Campaign. Appointed representatives from each partner organization have formed a Community Marketing Committee, a team that is working together to develop marketing materials promoting our community and sharing important information about educational services, recreational activities, business opportunities and more.

Priority projects include the following:
- Development of a portal website, which will provide general information about the community and include links to key organizations.

- A community/visitors guide highlighting information commonly requested by visitors and new residents.

- Video technology that will focus on various events, services and facilities in Derby.

Initial funding for the \$20,000 project is being shared between the City, USD 260, Community Foundation, DRC and Chamber of Commerce. Jajo Studio, a Wichita-based creative design agency, has been selected to develop the website, brochure and other materials.

By working together to develop a common theme and shared materials, the agencies that provide information about our community will communicate a comprehensive, shared message that will help make the City more attractive to new residents and businesses.



PRST STD
US POSTAGE
PAID
DERBY KS
PERMIT NO. 1207

City of Derby
611 Mulberry
Derby, KS 67037

